



SGD Bottle and Keg Coolers



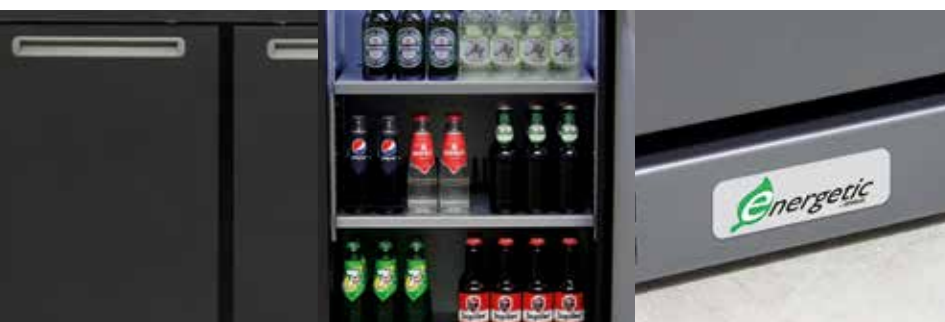
SGD-240 E

SGD-240 GE



SGD-120 RE

- 1, 2 or 3 door bottle and/ or keg cooling
- Glass doors or solid doors
- Maintenance friendly condenser
- Environment friendly and energy efficient



SGD

SGD Bottle and Keg Coolers

Serrco SGD Bottle and Keg Coolers have been designed to fit in every bar interior. Depending on the situation, both bottles and/or kegs can be stored within reach while the service friendly condenser requires less cleaning.

SGD Bottle and Keg Coolers are available in a 1, 2 or 3 door version. The Energetic label indicates that each SGC bottle cooler is environment friendly and energy efficient.



SGD-120RGE



SGD-360E

PRODUCT CHARACTERISTICS

- Fan assisted refrigeration for quick cool-down
- Better cooling performance with 35% less energy consumption
- Natural refrigerant
- Maintenance friendly condenser
- Bright LED illumination with separate on/off switch
- 2 shelves per door
- Locks fitted as standard
- Adjustable feet
- silver coloured skinplate inside, anthracite coloured skinplate outside
- Electronic thermostat with auto-defrost
- Exchangeable door seals
- Door left or right hinged (SGD-120)
- Glass doors or solid doors

	SGD-120E 1 DOOR (L OR R)	SGD-240E 2 DOORS	SGD-360E 3 DOORS
NET CAPACITY (L)	120	240	360
BOTTLE CAPACITY (25CL)	152	304	456
BOTTLE CAPACITY (33CL)	128	272	416
KEG CAPACITY (20L)	2	4	6
KEG CAPACITY (30L)*	1	2	3
COOLING CAPACITY**	546	546	630
POWER CONSUMPTION	288	288	320
REFRIGERANT	R290	R290	R290
TEMPERATURE RANGE	+2°C / +10°C	+2°C / +10°C	+2°C / +10°C
DIMENSIONS WXDHX (CM)	56X59X84/88	111X59X84/88	167X59X84/88



SGD-120RE



OPTIONAL : KEG SUPPORT FOR 30L KEGS

*) OPTIONAL KEG SUPPORT REQUIRED

**) TE = -5°C, TC = 45°C, AMBIENT 25°C



THE STANDARD IN ENVIRONMENTAL FRIENDLY REFRIGERATION.